



# EU Type Examination Certificate

Date: 2024/03/25

n. **855241301/OE**

Validity: 2029/03/24

The present Certificate cancels the previous one nr. 855234501/OE dated 2023/11/07.

The hereunder described items of Personal Protective Equipment have overcome positively the "EU type examination" (Module B), proving their conformity to the safety and health requirements of the Regulation (EU) 2016/425 (Annex II)

Manufacturer: **EVOC Sports GmbH**  
(Responsible of the PPE) Tegernseer Landstraße 37A, 81541 Munich – GERMANY

Type of PPE: **"Body-armor" for use during cycling and winter sports**

Category of PPE: **II** : "medium" risks.  
This certificate is based on reference standards listed below: its validity is no longer ensured should new version of the standards come into force.

Model **"TORSO PROTECTOR"**  
col. BLACK

Description: Body armor composed of chest and back protector, entirely made of a black TPE partially perforated and marked "EVOC" in light grey.



Technical Standard: **EN 1621-2:2014**  
(plus RCT integration of tests under conditioning at -20°C)  
**EN 1621-3:2018**  
(plus RCT integration of tests under conditioning at -20°C)  
**me-int 097**

Motorcyclists' protective clothing against mechanical impact - Part 2: Motorcyclists' back protectors – Requirements and test methods.  
Motorcyclists' protective clothing against mechanical impact - Part 3: Motorcyclists' chest protectors – Requirements and test methods.  
Body armor – assembly of protectors of the trunk and upper arms.

Intended use: preventive use during cycling and winter sports activities: protection is given by this PPE item only when fully equipped and implemented by suitable additional equipment.

Size range:

COMMERCIAL SIZE OF THE BODY ARMOR	BACK (FB = Full Back) Waist to Shoulder length (cm) as per EN 1621-2:2014	CHEST (C = Full)
<b>S/M</b>	43-47	Type B
<b>L/XL</b>	48-52	

Technical File: **DC-18299/E**





## EU Type Examination Certificate

Date: 2024/03/25

n. **855241301/OE**

Validity: 2029/03/24

Test report:

**RCT n° 4307059/E + 4213434/E**

Functions and performance levels:

To reduce the severity of injuries caused by impacts. The protectors give a limited protection against mechanical impact in case of accidents.

**BACK PROTECTOR:**

Method: "kerbstone" at 50J.

Mandatory tests: impact test performed at standard ambient conditions and after hydrolytic treatment (wet conditions) = level 2.

Optional tests: performance level achieved at high temperature (24h/+40°C) and low temperature conditioning (24h/-20°C) = level 2.

The overall performance level reached is therefore: **level 2**.

**CHEST PROTECTOR:**

Method: "Kerbstone" at 50 J;

- impact attenuation obtained at standard ambient conditions and after hydrolytic treatment (= wet conditioning) = PASS.

Optional tests: performance level achieved at high temperature (24h/+40°C) and low temperature conditioning (24h/-20°C) = level 1.

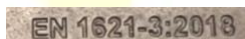
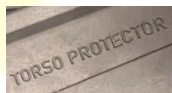
The overall performance level reached is therefore: **level 1**.

NOTES:

- the reference Standards EN 1621-1 and EN 1621-2 provide 2 performance levels and level 2 is the one offering higher performances;
- the protective functions also depend on the correct positioning of the protector, which is not part of this assessment and falls within the responsibility of the user.

Marking:

embossed on the protector and displaying the following information:



S/M

L/XL

- **CE marking**;
- name/trademark of the Manufacturer;
- item designation;
- pictograms in accordance with the European Technical Standards, protector category and type, the overall performance level achieved during testing as well as the nr. and year of the reference Standard and optional symbols for testing at high and low temperatures (T+, T-);
- for back protectors only: pictogram to indicate the W-S length (in cm);
- commercial size;
- additional information: date of manufacture, indication for positioning.



NOTE: the Technical File contains a more detailed description of the PPE (material, method of assembly, photographs or drawings), performance data, safety functions and level of protection, elements of conformity to the basic and supplementary requirements. The Technical File is integral part of the present Certification, which has to be kept available by the applicant to be forwarded - upon request - to the entitled person (supervising body, Controlling Officer).

